

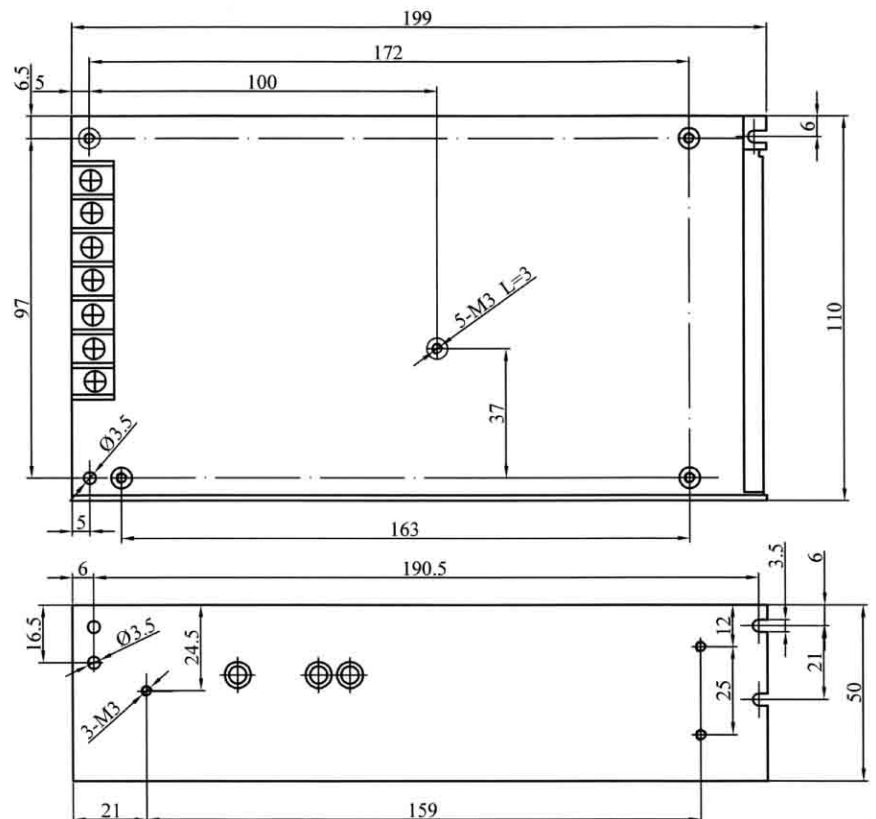
150W Single Output Switching Power Supply

- AC Input Range Selectable By Switch
- Low Cost, High Reliability
- Low Power Consumption
- Built-In EMI Filter
- Protections: Over Load/ Short Circuit
- 100% Full Load High Temperature Burn-in Test
- 1 Years Warranty



Input Voltage Range	88~132VAC/ 176~264VAC Selectable By Switch
Input Frequency	47-63Hz
Inrush Current	Cold Start, 30A/ 115VAC, 50A/ 230VAC
Output Adjustment Range	±10% Rated Output Voltage
Line Regulation	≤0.5%
Output Over Load Protection	105%~150% Shut Off, AC Recycle To Re-Start
Output Short Circuit Protection	Shut Off, AC Recycle To Re-Start
Rise, Hold Up Time	50mS, 20mS at Full Load (Typical)
Hi-pot Isolation	I/P-O/P, I/P-FG: 1.5KVAC, O/P-FG: 0.5KVAC
Operating Temperature Range	0°C to +50°C @100%, -10°C @80%, +60°C @60% Load
Storage Temperature Range	-40°C to +85°C, 0 to 95%RH (Non-Condensing)
Safety Standards	Design Refer To UL1012
EMC standards	Design Refer To FCC Part 15 J
Cooling Method	Free Air Cooling Convection
Weight	0.7Kgs/pcs

Product model	DC output	Load regul.	R&N	Efficiency
HTS-150-3.3	3.3V, 0~30A	1%	75mV	72%
HTS-150-5	5V, 0~30A	1%	75mV	78%
HTS-150-7.5	7.5V, 0~20A	1%	75mV	80%
HTS-150-9	9V, 0~16.7A	1%	90mV	81%
HTS-150-12	12V, 0~12.5A	0.5%	100mV	82%
HTS-150-13.5	13.5V, 0~11A	0.5%	100mV	83%
HTS-150-15	15V, 0~10A	0.5%	100mV	84%
HTS-150-24	24V, 0~6.5A	0.5%	150mV	85%
HTS-150-27	27V, 0~5.6A	0.5%	150mV	85%
HTS-150-48	48V, 0~3.2A	0.5%	150mV	86%



notes:

1. All dimensions in mm.

2. Tolerance (except cable length:): xx = ±0.04

xxx = ±0.010